

Second Sunday of Epiphany

Sunday, January 16, 2022



Christ Lutheran Church
6500 E. Stearns Street
Long Beach, California 90815
Phone 562-598-2433

www.christlutheranlb.com
Preschool 562-594-6117
www.clclb.com

Welcome to worship! We're glad you're here!

To assist in your worship: * means stand as you are able, **bold** print means we respond together + means you may make the sign of the cross, should you choose.

TODAY'S WORSHIP THEME:

Jesus was angry when he saw what was going on in the temple. Sometimes anger is the right thing.

Our liturgy is taken from:

Sundays and Seasons.com. Copyright 2022 Augsburg Fortress. All rights reserved. Reprinted by permission under Augsburg Fortress Liturgies Annual License #20338. Reprinted by permission under CCLI license # 230154. All rights reserved. Reprinted by permission under © 2022, One License #A-706154. All rights reserved

GATHERING

The Holy Spirit calls us together as the people of God.

PRELUDE

WELCOME AND ANNOUNCEMENTS

*CALL TO WORSHIP

Jesus calls us into this house of worship.

We come with open ears, minds, and hearts.

We honor and respect this house,

And we bring our respect out into the world.

*GATHERING SONG

Come, Now is the Time to Worship

REFRAIN: Come, now is the time to worship. Come, now is the time to give your heart

Come, just as you are to worship. Come, just as you are before your God.

Come!

One day every tongue will confess You are God One day every knee will bow

Still the greatest treasure remains for those Who gladly choose You now.

REFRAIN

Willingly we choose to surrender our lives Willingly our knees will bow

With all our heart, soul, mind and strength We gladly choose You now.

REFRAIN

*GREETING

The grace of our Lord Jesus Christ, the love of God and the communion of the Holy Spirit be with you all. **And also with you.**

*KYRIE



Ky - ri - e e - lei - son. Lord, have mer - cy.

Chris - te e - lei - son. Christ, have mer - cy.

Ky - ri - e e - lei - son. Lord, have mer - cy.

***HYMN OF PRAISE**

Glory to You

1 Glo - ry to you, God, for yours is the earth;
 2 Glo - ry to you, God, for yours is the earth;
 3 Glo - ry to you, God, for yours is the earth;

yours is the prom - ise, the bless - ing, the birth.
 yours the ho - san - nas, the dy - ing, re - birth.
 yours the a - noint - ing, the ra - di - ant worth.

Ours the re - joic - ing for Word giv - en frame;
 Ours the re - joic - ing for na - ture re - claimed;
 Ours the re - joic - ing for spir - its a - flame;

ours the thanks - giv - ing to your ho - ly name.

Ours be the tell - ing of deeds great - ly done;



***PRAYER OF THE DAY**

God of justice, **Jesus was angry when he saw how people treated the temple, your house. Remind us that how we treat your house, your mission, and your people matters. Amen.**

SPECIAL MUSIC

*Children of Light
Chancel Choir*

Boyd

WORD

God speaks to us in scripture reading, preaching, and song.

FIRST READING:

Psalm 127

Pew Bible Old Testament Pg. 634

The Word of the Lord. **Thanks be to God**

***GOSPEL ACCLAMATION**



***GOSPEL**

John 2:13-25

Pew Bible New Testament Pg.96

The Holy Gospel according to John the 2nd chapter. **Glory to you, O Lord.**

The reading concludes: The Gospel of the Lord. **Praise to you, O Christ.**

CHILDREN'S MESSAGE

Pastor Pam Challis

SERMON

Pastor Pam Challis

***SERMON HYMN**

Songs of Thankfulness and Praise

#310

***APOSTLES' CREED**

I believe in God, the Father almighty, creator of heaven and earth.

I believe in Jesus Christ, God's only Son, our Lord, who was conceived by the Holy Spirit, born of the virgin Mary, suffered under Pontius Pilate, was crucified, died, and was buried; he descended to the dead.

On the third day he rose again; he ascended into heaven, he is seated at the right hand of the Father, and he will come to judge the living and the dead.

I believe in the Holy Spirit, the holy catholic Church, the communion of saints, the forgiveness of sins, the resurrection of the body, and the life everlasting. Amen.

PRAYERS OF THE CHURCH

We pray for the church, the world, and all those in need.

God of Righteousness, **hear our prayer.**

All these things we entrust to you, knowing that you are ultimately merciful and have already heard our prayers. In Jesus' name we pray. **Amen.**

MEAL *God feeds us with the presence of Jesus Christ.*

*THE GREAT THANKSGIVING

The Lord be with you. **And also with you.**

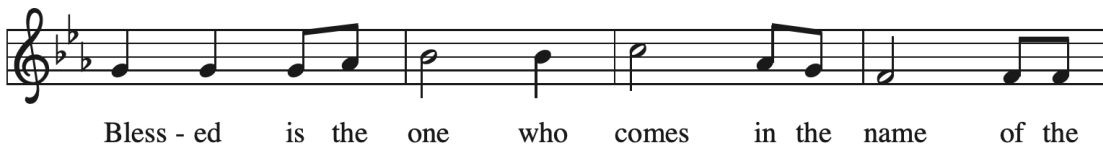
Lift up your hearts. **We lift them to the Lord,**

Let us give thanks to the Lord our God. **It is right to give our thanks and praise.**

It is indeed right, and our duty...we praise your name and join their unending hymn:

*SONG OF THANKSGIVING *Holy, Holy, Holy*





***WORDS OF INSTITUTION**

On the night our Lord Jesus was betrayed...we proclaim the Lord's death until he comes.

***LORD'S PRAYER**

Our Father in heaven, hallowed be your name, your kingdom come, your will be done, on earth as in heaven. Give us today our daily bread. Forgive us our sins as we forgive those who sin against us. Save us from the time of trial and deliver us from evil. For the kingdom, the power, and the glory are yours, now and forever. Amen.

SENDING

God blesses us and sends us in mission to the world.

***BLESSING**

God, who leads you in pathways of righteousness, who rejoices over you, and who calls you by name, † bless your going out and your coming in, today and forever.
Amen.

***DISMISSAL**

Go with Christ into a weary world. Share the good news. **Thanks be to God.**

POSTLUDE WITH HOLY COMMUNION ON THE LABYRINTH

CHRIST LUTHERAN CHURCH STAFF

Pastor	Rev. Dr. Pamela Challis	pjschallis@gmail.com
Office Manager	Kim Croes	officemanager@christlutheranlb.com
Preschool Director	Lisa Clinton	info@clplb.com
Dir. of Worship & Music	Brian Madigan	brimad@aol.com
Accompanist		Roger Halvorson
Missionary to Colombia		Linda Gawthorne

It is our joy to worship with you this morning!

CHILDCARE

We hope everyone of all ages and abilities will be able to worship together. A special play area is available at the back of the sanctuary. If you need to take a "time out" please do so in the narthex (gathering space at the entry), and return to worship when you are ready. A changing table is located in the restroom off the main entry. Activity bags, filled with crayons, paper and storybooks, are available in the play area. Please ask an usher if you need any assistance.

OUR MISSION STATEMENT *Christ Is Alive!*

OUR VISION STATEMENT

Christ Lutheran Church is a community of believers committed to praising our Savior Jesus Christ. With his love, we reach out to those in need and welcome all with open hearts. Our worship dynamically combines, word, song and prayer to share God's incredible message. Having faith in this, we go forth knowing that with God and the power of the Holy Spirit, anything is possible.

LIKE us on **Facebook** at www.facebook.com/christlutheranlb

Watch us on **YouTube**@ Christ Lutheran Long Beach

Find us on **Instagram** @ christ_lutheran_lb

Write a review of Christ Lutheran Church on **YELP!**